



TRAINER  
YARETT PINEIRO

INTRODUCTORY

# HEALTH CARE SIGN LANGUAGE

*Open for all HPD*

NOVEMBER 23RD, 12:00-1:00PM  
VIA PRIVATE ZOOM LINK

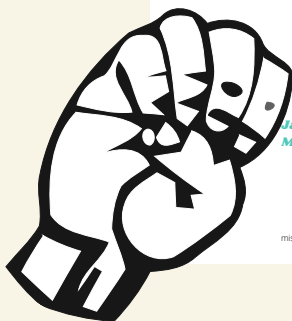


*Limited slots!  
RSVP  
today!*

**For more information contact:**

*Janira Cabrera (PDC Community Chair) - jc4330@mynsu.nova.edu*  
*Marcos Romero (APhA-ASP President) - mr2744@mynsu.nova.edu*

Students are adults and are responsible for their own behavior. Phi Delta Chi and APhA-ASP are not an agent of Nova Southeastern University, and as a result, this organization and its members will be responsible to make sure there is no misconduct at this event. This organization, its members and its guests may not be covered by the University's liability insurance and the University will not represent this organization, its members or guests if sued for conduct resulting in injury.



**APhA-ASP**  
AMERICAN PHARMACISTS ASSOCIATION  
ACADEMY OF STUDENT PHARMACISTS



College of Pharmacy  
NOVA SOUTHEASTERN UNIVERSITY

**NSU**  
Florida